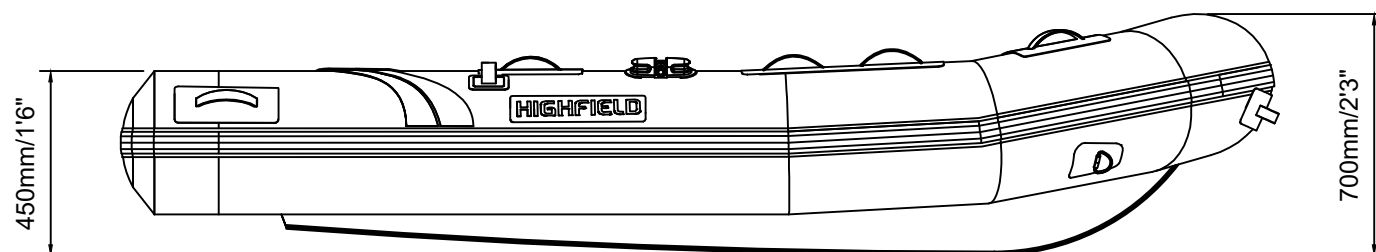
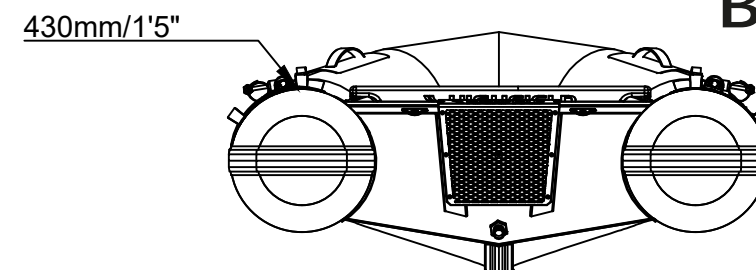


ROLL-UP 320 AL

ESPECIFICAÇÕES

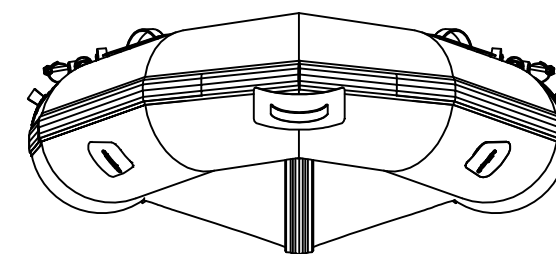
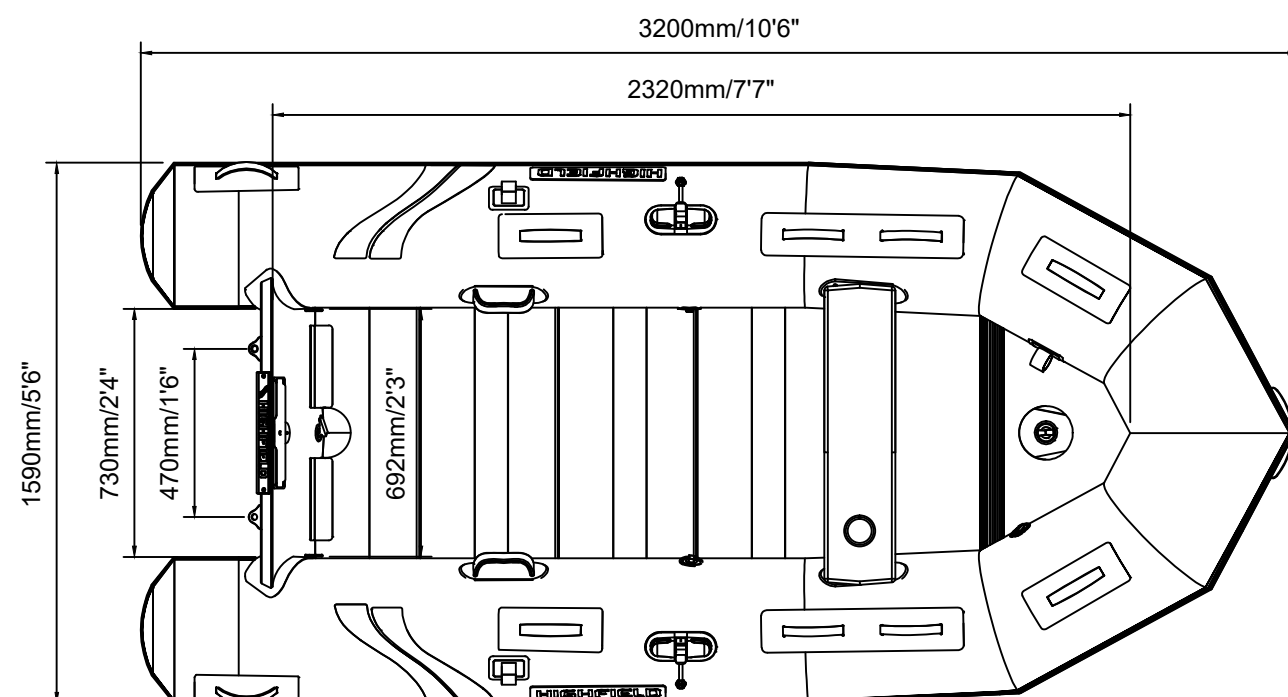


Vista lateral



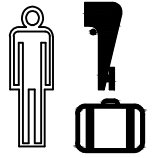


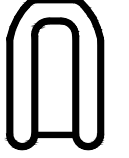


Vista posterior

Vista superior



Vista frontal

ESPECIFICAÇÕES E CAPACIDADE MÁXIMA (Sujeito a modificações sem aviso prévio. Tolerâncias : dimensões ±3%, pesos ±5%)

MODELO	ISO 5185 PART	ISO 5185					Compr.	 Motor de rabeta								Peso líquido (Aproximado)  15HP (11,19KW) +Combustível		CÂMARAS DE AR						
			KG	LB	#	KG		LB	Potência Máx.	Recomendado		Velocidade máx.			KG	LB	KG		LB	PSI	BAR			
										KW	HP	KW	HP	KT	MPH	Km/h								
RU320AL	/	C	565	1246	4,5	338	744	S	42	93	11,19	15	11,19	15	/	/	/	53	112	95	205	3	3,63	0,25